

Alibaba.com Gold Plus Supplier

Main Product Lines Verification Report

Presented to

Foshan Shunde Huaquan Furniture Co., Ltd.

佛山市顺德区华权家具有限公司

Company Address	Area B, No. 5, Luoxu Road, Wanggang Village, Longjiang Town, Shunde District, Foshan City, Guangdong Province, China
Consigner of Assessment:	Alibaba
Gold Supplier Member ID:	gdhuaquan
Gold Supplier Company Name:	Foshan Shunde Huaquan Furniture Co., Ltd.
Contact Person:	Ms. Bonnie Liu
Phone Number:	0086-13078437801
Fax Number:	Confidential
Email:	max@dian-tang.com
Website Address (URL):	http://gdhuaquan.en.alibaba.com

Service Provided by SGS
Report No.: 21613796_P+T





Contents

Section 1: Public Sofa; Leisure Chair; Soundproof Booth; Table; Pouf.....	5
1.1 The Competitive Advantage of Product Line	5
1.2 Product Line Description.....	5
1.3 Production Capacity	5
1.4 Production Machinery.....	5
1.5 Testing Machinery.....	7
1.6 Production Flow	7
1.7 Export Market Distribution (Previous Year).....	8
1.8 Order Capacity	8
1.9 Certification	8

Report No:	21613796_P+T	Report Date:	23/Apr./2021	Assessed By	George Li	
CONFIDENTIAL		All Rights Reserved			Page No:	2 of 9



Report Number:	21613796_P+T	Assessment Type:	Main Product Lines Verification
Date of Assessment:	23/Apr./2021	Report Date:	23/Apr./2021
Assessor's Name:	George Li	Validity Period:	24/Apr./2021 -- 23/Apr./2022
Reviewed By:	Sam Wang	Online Verification:	www.sgs.com/ecv

Important Notes:

SGS's Disclaimer:

This report reflects our findings for the particularly concerned company on the date of our service only. This report does not discharge or release the factory/sellers/suppliers from their commercial, legal or contractual obligations with buyers in respect of products provided by the factory/sellers/suppliers. Any reader other than the party for whom this report has been specifically issued is hereby informed that the general conditions of service of SGS contain liability limitation provisions.

Alibaba.com's Disclaimer:

This report has been independently prepared by a third party verification agency. The report is provided on an "AS IS" and "AS AVAILABLE" basis. The information contained in the report may change without notice and no obligation is assumed to update the information after publication. Alibaba (including its affiliates) is not involved in the preparation of the report. Publishing of the report by no means means that Alibaba endorses or recommends the report. Therefore, Alibaba cannot be held responsible for any inaccuracy or omission in the report.

To the maximum extent permitted by law, Alibaba expressly disclaims any warranty, expressed or implied, in regard to the report, including any implied warranty of merchantability, fitness for a particular purpose or non-infringement. Your use of or reliance on this report will be at your own discretion and risk. To the maximum extent permitted by law, in no event shall Alibaba be liable for any party for any direct, indirect, punitive, incidental, special or consequential damage costs, expenses, legal fees or losses or any damages whatsoever arising out of or in any way connected with any use of the report even if advised of the possibility of such damages.



Declaration:

All the information below in this report may cover both the Gold Supplier and its Related Company, except the export records, which only belong to the Gold Supplier. Their relationship has been affirmed according to laws and regulations in China, also it will be clearly displayed below.

Does the gold supplier have a related company?	<input checked="" type="checkbox"/> Yes <input type="checkbox"/> No
If has, Please list the related company name:(abbrev. company A)	Integrated(Foshan) Furniture Co.,Ltd
Company A's Address:	Siyue Industrial Zone, Luoxing Village, Danzao Town, Nanhai District, Foshan City, Guangdong Province, China
Relationship with Gold Supplier	<input type="checkbox"/> Wholly Owned <input checked="" type="checkbox"/> Shareholder/Partner <input type="checkbox"/> Cooperation Partner <input type="checkbox"/> Kindred between Owners

Enterprise relationship chart:



Section 1: Public Sofa; Leisure Chair; Soundproof Booth; Table; Pouf

1.1 The Competitive Advantage of Product Line

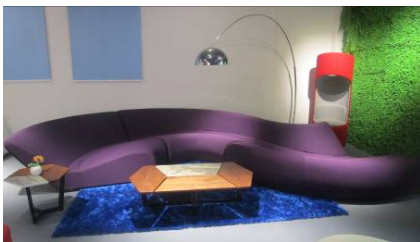
The company can provide OEM and ODM services.

1.2 Product Line Description

Public Sofa; Leisure Chair; Soundproof Booth; Table; Pouf

Product Sample

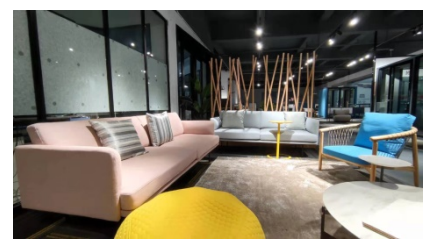
1. Public Sofa



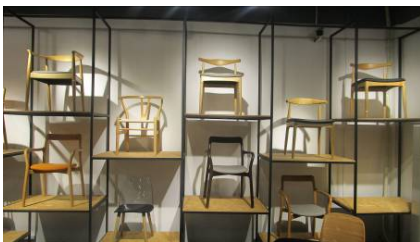
2. Public Sofa



3. Public Sofa



4. Leisure Chair



5. Leisure Chair



6. Leisure Chair



1.3 Production Capacity



Production Line Capacity	Actual Units Produced (Previous 12 months)
Public Sofa :1,500 Sets / Month, Leisure Chair:1,500 Pcs / Month, Soundproof Booth:1,500 Pcs / Month, Table:1,500 Pcs / Month, Pouf:1,500 Pcs / Month	Public Sofa :15,000 Pcs, Leisure Chair:15,000 Pcs, Soundproof Booth:15,000 Pcs, Table: 15,000Pcs, Pouf: 15,000 Pcs
Number of Product Categories	Number of Product Models
10	2,100

1.4 Production Machinery

Machine Name	Brand & Model No.	Quantity	Number of Year(s) Used	Condition
CNC Cloth Cutting Machine	AiKe	1	3	Acceptable
CNC Wood Cutting Machine	Paros	1	4	Acceptable
Sliding Table Saw	N/A	1	6	Acceptable



Cotton Slitting Machine	N/A	1	2	Acceptable
Sewing Machine	N/A	13	6	Acceptable
Air Compressor Machine	N/A	1	4	Acceptable
Cutting Machine				
CNC	V4	2	6	Acceptable
Numerical Control Machine	LTP532	1	6	Acceptable
Bending Machine	JAXUN	3	6	Acceptable
Manipulator	Panasonic	1	3	Acceptable
CNC Cloth Cutting Machine	CNC Wood Cutting Machine	Sliding Table Saw		
				
Cotton Slitting Machine	Sewing Machine	Air Compressor Machine		
				
Cutting Machine	CNC	Numerical Control Machine		
				

Bending Machine	Manipulator	N/A
		N/A

1.5 Testing Machinery

Machine Name	Brand & Model No.	Quantity	Number of Year(s) Used	Condition
N/A	N/A	N/A	N/A	N/A
N/A	N/A	N/A	N/A	N/A
N/A	N/A	N/A	N/A	N/A

1.6 Production Flow

No.	Production Process	No.	Production Process	No.	Production Process
1	 Raw Material	2	 Wood Cutting	3	 Assembly
4	 Sponge Cutting	5	 Sticking Sponge	6	 Sewing
7	 Covering	8	 Assembly	9	 Checking and Packing
10	 Store	11	N/A	12	N/A
			N/A		N/A



1.7 Export Market Distribution (Previous Year)		
Market	Revenue (USD)	Total Revenue (%)
North America	Confidential	15
South America	0	0
Eastern Europe	0	0
Southeast Asia	Confidential	10
Africa	0	0
Oceania	Confidential	20
Mid East	Confidential	25
Eastern Asia	0	0
Western Europe	0	0
Central America	0	0
Northern Europe	0	0
Southern Europe	0	0
South Asia	Confidential	30
Domestic Market	0	0
1.8 Order Capacity		
1.8.1 Real Case for Lower MOQ		
Products Name	#MOQ (In the last 12 months)	
Public Sofa	1 Set	
Leisure Chair	2 Pcs	
Soundproof Booth	2 Pcs	
Table	2 Pcs	
Pouf	2 Pcs	
1.8.2 Real Case for Large Contract		
Products Name	#Order (In the last 12 months)	
Public Sofa	500 Sets	
1.8.3 Shortest Lead Time		
Products Name	#Order (In the last 12 months)	Shortest Lead Time (In the last 12 months)
Public Sofa	2 Pcs	15 Days
1.9 Certification		
Certification Name	N/A	Certificate Picture
Certified By	N/A	N/A



Certificate No.	N/A	
Product Name & Model No.	N/A	
Available Date-Expired Date	N/A	

-- End of Report --